



MAGRO

The New Age Innovative Surfaces



A-CLASS  
MARBLE

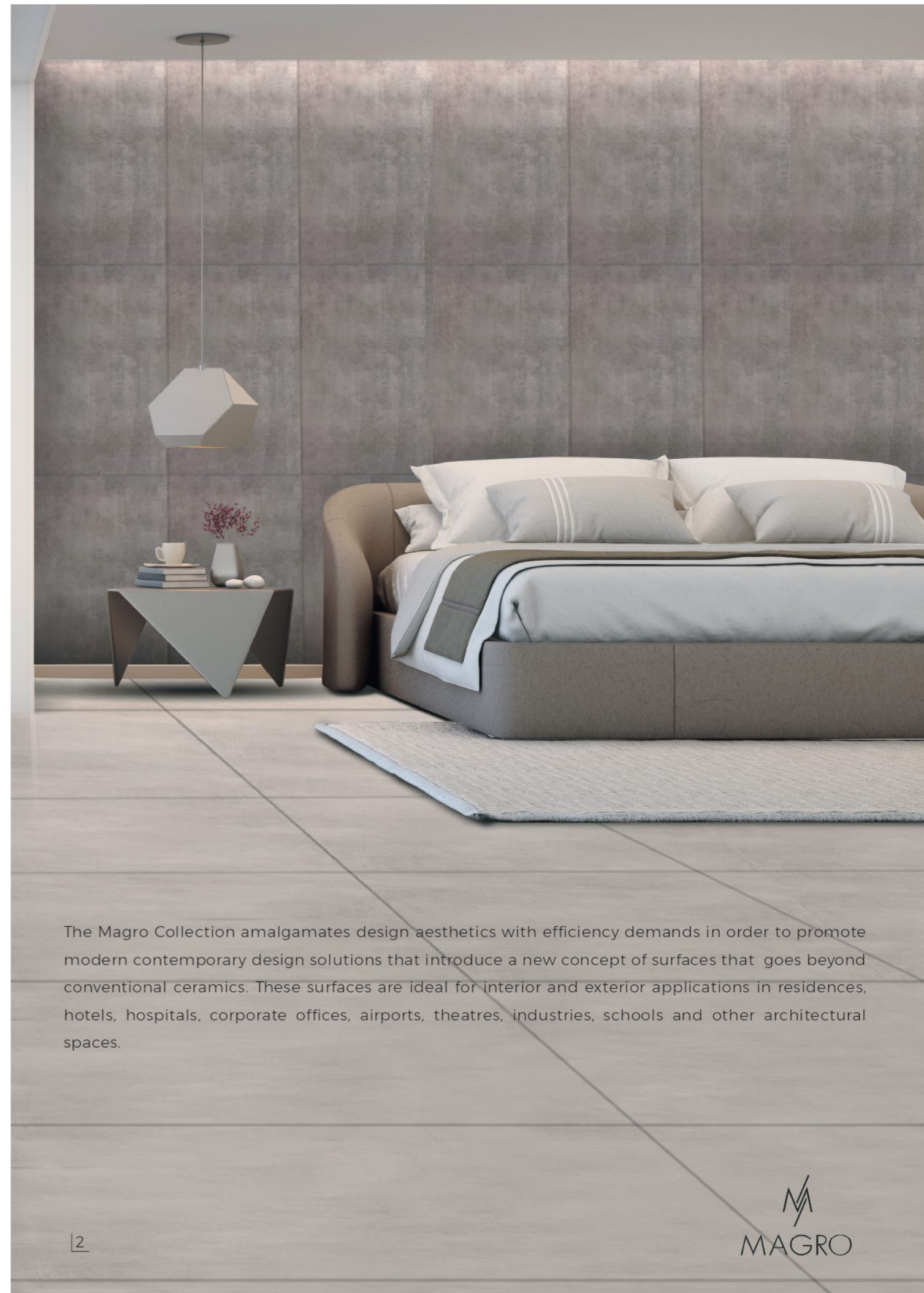


## The New Age Innovative Surfaces

With a shining presence for over 50 years, A-Class Marble aims to revolutionise the industry of stone and architectural surfaces with the global arena through its dynamism and legacy.

Bringing an innovative approach towards design, A-Class Marble presents Magro - a range of new-age porcelain slabs that offers an opportunity to style your dream abodes with its native vibes and tones.

Magro is a Make-in-India initiative which enormously encourages #vocalforlocal series of porcelain slabs that can enhance modern architectural and interior spaces with its aesthetic and efficient properties.



The Magro Collection amalgamates design aesthetics with efficiency demands in order to promote modern contemporary design solutions that introduce a new concept of surfaces that goes beyond conventional ceramics. These surfaces are ideal for interior and exterior applications in residences, hotels, hospitals, corporate offices, airports, theatres, industries, schools and other architectural spaces.



Cladding - Galaxy I  
Flooring - Grey FB

# 15 mm Collection

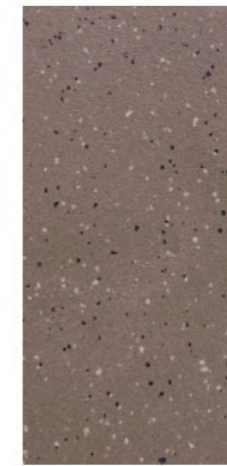
Finish: Matt

Size: 800 X 2400 mm

Application: Cladding, Flooring & Counter Tops



GREY FB



VARDE FB



BEIGE FB



BLACK FB



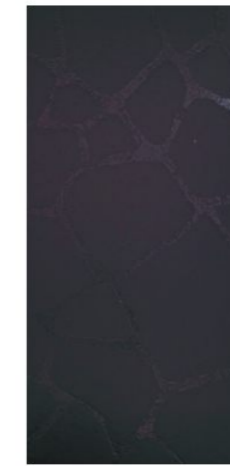
BROWN FB



SUNSHINE F BLACK



STEEL GREY MATT



SUNSHINE I BLACK



GALAXY I



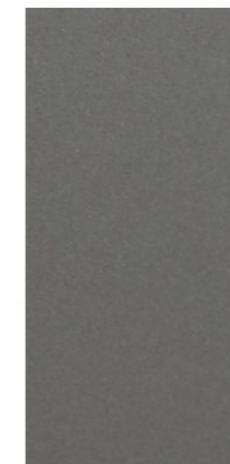
CHOCO



SUNSHINE C WHITE



GALAXY WHITE



FOSSIL G



SUNSHINE C BLACK



SUNSHINE F WHITE



# 9 mm Collection

Finish: Honed  
Size: 1200 X 2400 mm  
Application: Cladding & Flooring



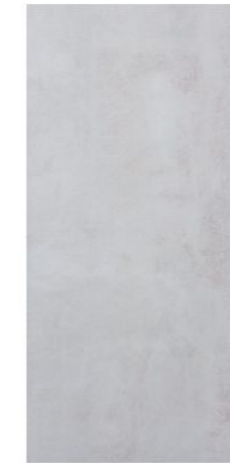
PEBBLE STONE



DREAMY GREY



DEEP EBONY



VIRTUOUS WHITE



MISTY GREY



EARTHY MIST



EARTHY BRONZE



CARAMEL



ANTIQUÉ BEIGE



TERRA BEIGE



DAWNING BEIGE



RUSTIC BROWN



IRON RUST



Cladding - Antique Beige  
Flooring - Earthy Mist

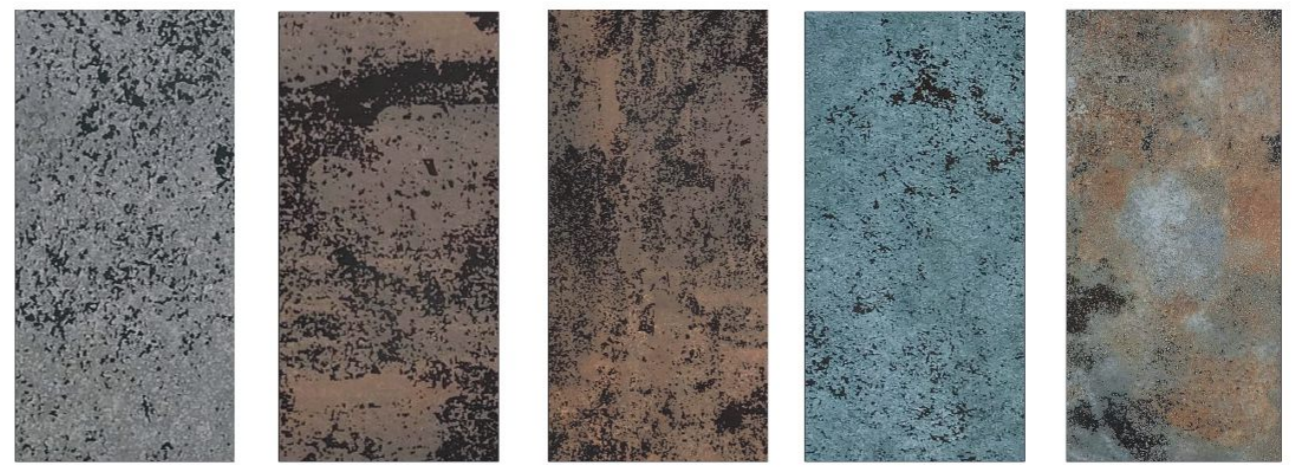




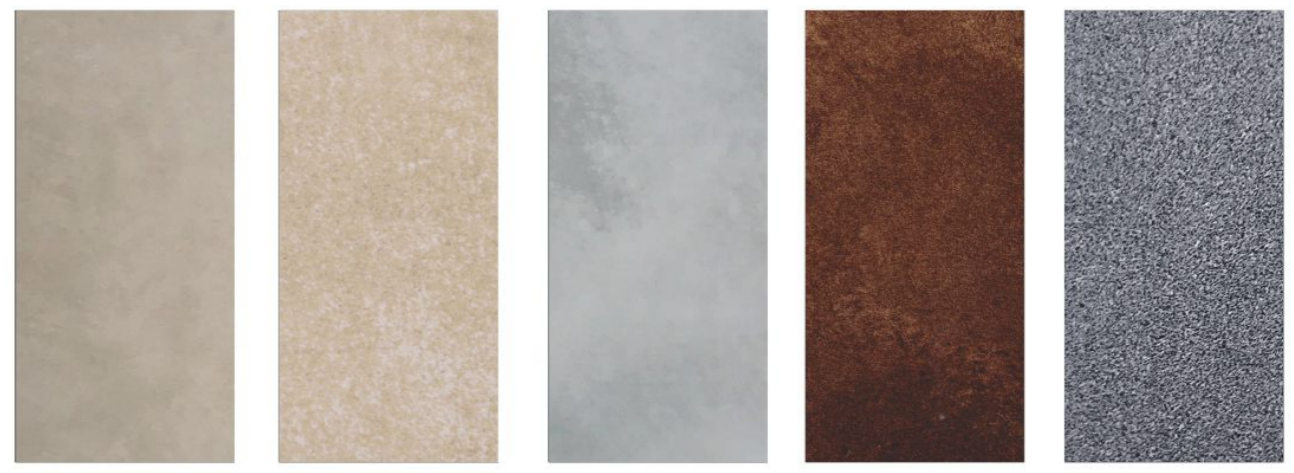
Cladding - I Aqua  
Flooring - Beige FB

# 5 mm Collection

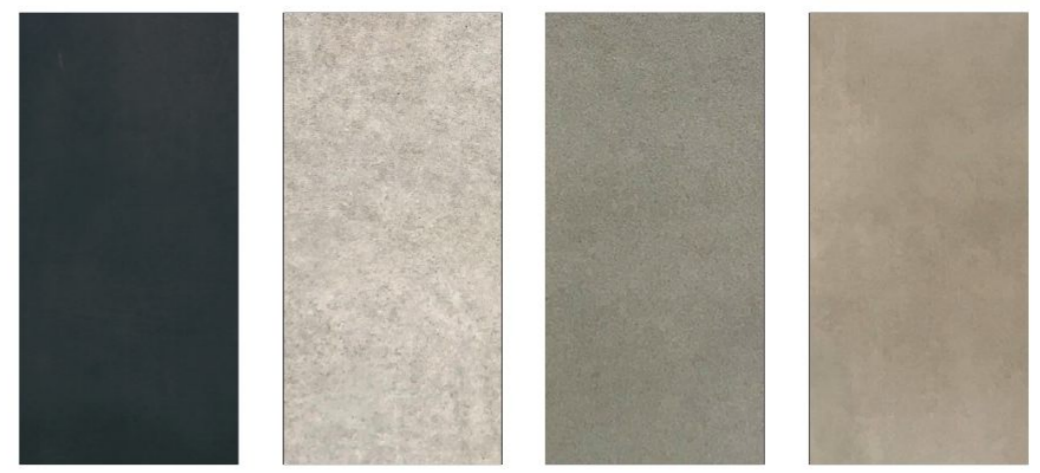
Finish: Honed  
Size: 600 X 1200 mm  
Application: Cladding



I GREY      O RUST      R D BROWN      I AQUA      R BLUE



HYDRA A      P IVORY      ASH C      P COOPER      D GREY



C BLACK      E PEARL      D CHOCOLATE      OLIVE C

# Technical specifications

THICKNESS : 15 MM    SIZE : 800 x 2400MM    SINTERED STONE

SR. NO.	Characteristics	standard as per iso-13006/ en14411 GROUP	VALUES	TEST METHOD
<b>regulatory properties</b>				
1	Deviation in Length & Width	± 0.5%	± 0.2%	ISO 10545-2
2	Deviation in Thickness	± 5%	± 5%	ISO 10545-2
3	Straightness of Sides	± 0.5%	± 0.2%	ISO 10545-2
4	Rectangularity	± 0.5%	± 0.2%	ISO 10545-2
5	Surface Flatness	± 0.5%	± 0.3%	ISO 10545-2
6	Color Difference	△E<1.00	△E<0.30	ISO 10545-16
7	Glossiness	As Per Mfg.	>90%	Gloss Meter 60
<b>STRUCTURAL PROPERTIES</b>				
8	Water Absorption	≤ 0.5 %	≤ 0.06 %	ISO 10545-3
9	Apparent Density	As Per Mfg.	> 2.20 g/cc	ISO 10545-3
<b>massive mechanical properties</b>				
10	Modulus of Repture	Min 35N/mm <sup>2</sup>	Min 40N/mm <sup>2</sup>	ISO 10545-4
11	Breaking Strength	Min.1300 N	Min. 7200 N	ISO 10545-4
12	Impact Resistance	As per Mfg.	Min. 0.55	ISO 10545-4
<b>surface mechanical properties</b>				
13	Surface Abrasion Resistance	As per Mfg.	Min. class 3	ISO 10545-7
14	Moh's Hardness	As per Mfg.	Min. class 4	BS EN 15771
<b>Thermo hygrometric properties</b>				
15	Frost Resistance	As Per Mfg.	Frost Proof	ISO 10545-12
16	Thermal Shock Resistance	Min. 10 Cycle	Min. 10 Cycle	ISO 10545- 9
17	Moisture Expansion	Max. 0.6mm/m	Max. 0.02mm/m	ISO 10545-10
18	Thermal Expansion	Max. 9.0 x 10 <sup>-4</sup>	Max. 6.0x10 <sup>-4</sup>	ISO 10545- 8
<b>CHEMICAL PROPERTIES</b>				
19	Chemical Resistance	As Per Mfg.	No Damage	ISO 10545-13
20	Stain Resistance	Resistant	Resistant	ISO 10545-14
<b>safety Properties</b>				
21	Slip Resistance	As Per Mfg.	N. A.	DN 51130
22	Fire Resistance	As Per Mfg.	Fire Proof	N. A.
<b>packing details</b>				
TILE SIZE	THICKNESS	NO. OF TILES/BOX	WEIGHT/BOX (approx.)	COVERAGE AREA
800 X 2400mm	15 mm	1 Pcs	67 kg.	20.67 Sq. Ft.

# Technical specifications

THICKNESS : 9 MM    SIZE : 1200 x 2400MM    GLAZED VITRIFIED

SR. NO.	CHARACTERISTICS	INTERNATIONAL STD. ISO 13006 /EN 14411 GROUP B1a	SPECIFICATION	METHOD OF TESTING
<b>regulatory properties</b>				
1	Length	(+/-) 0.6%	(+/-) 0.2%	ISO 10545-2
2	Thickness	(+/-) 5%	(+/-) 3.0%	ISO 10545-2
3	Straightness Of Sides	(+/-) 0.5%	(+/-) 0.2%	ISO 10545-2
4	Rectangularity	(+/-) 0.5%	(+/-) 0.1%	ISO 10545-2
5	Surface Flatness	(+/-) 0.5%	(+/-) 0.1%	ISO 10545-2
6	Glossiness (Only for polished products)	Declared By Manufacturer	92-105%	ISO 2813 (Gloss Meter)
7	Surface Quality	Min. 95% tiles should be free from defects	Min. 98% tiles free from defects	ISO 10545-2
<b>physical characteristics</b>				
8	Water Absorption	E (>+)0.5%	(>+)0.05%	ISO 10545-3
9	Moh's Hardness	>H6	>H6	ISO 10545-3
10	Moisture Expansion	Nil	Nil	ISO 10545-10
11	Abrasion Resistance	Declared By Manufacturer	Min Class 3	ISO 10545-7
<b>mechanical characteristics</b>				
12	Flexural Strength (MOR)	>H 35 N/mm <sup>2</sup> (350 kg/cm <sup>2</sup> )	(>H 37 N/mm <sup>2</sup> (370 Kg/cm <sup>2</sup> )	ISO 10545-4
13	Breaking Strength	1300 Newton	2000 Newton	ISO 10545-4
14	Impact Resistance	Declared By Manufacturer	No Indentation or Cracking	ISO 10545-5
<b>safety characteristics</b>				
15	Skid Resistance (Dynamic Friction Coefficient)	R10	R10	ISO 10545-17
16	Density	>H 2.0 Gm/cc	(>H 2.1 Gm/cc	Dn 51082
<b>THERMO PHOTO CHARACTERISTICS</b>				
17	Thermal Shock Resistance	resistant To 10 Cycles	No Damage	ISO 10545-9
18	Frost Resistance	frost proof	No Damage	ISO 10545-12
19	Coefficient Of linear Thermal Expansion	9x10 <sup>-6</sup> K <sup>-1</sup>	<6.5x10 <sup>-6</sup> K <sup>-1</sup>	ISO 10545-8
20	Color Resistance To UV Light	Resistant	Resistant	ISO 10545-16
<b>chemical characteristics</b>				
21	Chemical Resistance : HOUSEHOLD CHEMICALS & SWIMMING POOL SALTS	Min Class -GB Min Class-GLB	No Damage Confirm To Classes-GLA	ISO 10545-13
22	Chemical Resistance : LOW CONCENTRATIONS ACIDS & ALKALIS	Min Class- GHB	Confirm To Classes - GHA	ISO 10545-13
23	Chemical Resistance : HIGH CONCENTRATIONS ACIDS & ALKALIS	Min Class-3	Min Confirm To Class - 4	ISO 10545-14
24	Stain Resistance			
<b>packing details</b>				
slab	dimensions (mm)	area (sq.mt.)	weight (approx.)	Area (sq.ft.)
1	1200 x 2400	2.88	60 kgs	31 Sqft.

# Technical specifications

THICKNESS : 5 MM

SIZE : 600 x 1200MM

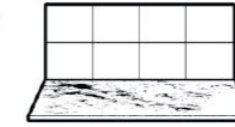
GLAZED VITRIFIED

SR. NO.	ITEM	Indian index	ISO index	Tile
1	Water absorption (%)	Average Value $\leq 0.5$	Average Value $\leq 0.5$	$\leq 0.08$
2	Breaking Strength (N)	Average Value $\geq 600$	Average Value $\geq 560$	600
3	Modulus of Rupture (MPa)	$\geq 35$	$\geq 35$	40
4	Abrasive Resistance	$\geq$ Grade 3	-	Grade 4
5	Resistance of thermal shock	Without Cracking and spalling after test	Without Cracking and spalling after test	Without Cracking and spalling
6	Resistance of crazing	Without Cracking and spalling after test	Without Cracking and spalling after test	Without Cracking and spalling after test
7	Frost Resistance	Without Cracking and spalling after test	Without Cracking and spalling after test	Without Cracking and spalling
8	Chemical Resistance	Not Lower than grade GB	Not Lower than grade GB	Grade GA
9	Stain Resistance	Not Lower than grade III	Not Lower than grade III	Grade 5
10	Limit of Radioactive Nuclear	Type A Ira $\leq 1.0$ IY $\leq 1.03$	-	Type A Ira $\leq 0.40$ IY $\leq 0.89$
11	Elastic limit (mm)	$\geq 12$	-	20
12	Anti - slip slope	$\geq 12^\circ$	-	25 $^\circ$
<b>PACKING</b>				
Specification (mm)	PCS / Box	Sq. Meter / Box	KG / Box	
600 x 1200	4	2.88	34 (Approx)	

## SUGGESTED INSTALLATION GUIDELINES

### 1. Background

- Prepare the screed and make sure there are no cracks or other visible damages.



### 2. Handling and cutting of the material



- To handle large formats, it is recommended to use specific tools. For 1200x2400 mm or higher sizes, it is recommended to use transport carts.
- To avoid accidental bumps, it is recommended to transport the material keeping it in its boxes, if available.
- For the cutting of large slabs it is recommended to use one of the various types of dry cutters in the market. Using other tools you may experience chipping or breakage the material. If the cutter blade is damaged or too warm, the risk to realize not optimized cuts will grow.

### 3. Applying the adhesive

- The adhesive must be applied both on the back of the slab and on the screed. Also for this operation, it is recommended to use specific tools. Otherwise, there's the risk of doing non homogeneous drafting, causing the creation of air bubbles that could compromise the installation.



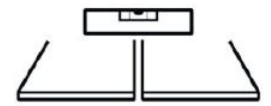
### 4. Joints



- A 2mm joint space is suggested for all sizes.
- For slabs, 2mm joint is strongly recommended, as well as proper positioning of spacers on floor sides.

### 5. Use Of Levelers During The Installation

- For optimum surface performance, it is strongly recommended to use a floor leveling system.
- This solution also acts as a spacer for joints, thus contributing to make the installation more accurate.



### 6. Grout finishing



- It is recommended to use epoxy grout in a colour in tint with the product.

### 7. First cleaning after installation

- Once the installation is complete, it is recommended to use specific detergents for the first surface cleaning. If epoxy grout have been used, it is absolutely necessary to clean the surface before the grout is dry. Otherwise there is the risk that the grout residues will stain the product indelibly.





## A-CLASS MARBLE INDIA PVT.LTD.

New Delhi | Kishangarh (Raj.) | Ahmedabad

Regd. Office : SP-27, Phase-Vth, RIICO Industrial Area, Madanganj, Kishangarh - 305801 (Raj.) M : +91 9999800071	68/2, Najafgarh Road, Moti Nagar, New Delhi- 110015 M : +91 9999800071	1411, 14th Floor, Shapath V, SG Highway, Ahmedabad - 380015 T : +91 079 40036948
--	--	--

✉ : [info@aclassmarble.co.in](mailto:info@aclassmarble.co.in)    🌐 : [www.aiclassmarble.co.in](http://www.aiclassmarble.co.in)    📱 : [f](#) [i](#) [t](#) [v](#) [i](#) [n](#) : [aclassmarble](#)

SCAN QR



Kishangarh  
Showroom



Ahmedabad  
Showroom



Website